

# How To Rewire A 40VDC Linear Power Supply For 240VAC Input

**WARNING:** AC line voltages are lethal. Do not attempt this if you are not absolutely confident in your skills. Hire a professional. We were hesitant to post this information. Just know that if you get hurt or burn your house down, you cannot hold us liable.

**1** Make sure power supply is disconnected from AC input.

**2** Disconnect the 40VDC outputs from the rest of the circuit

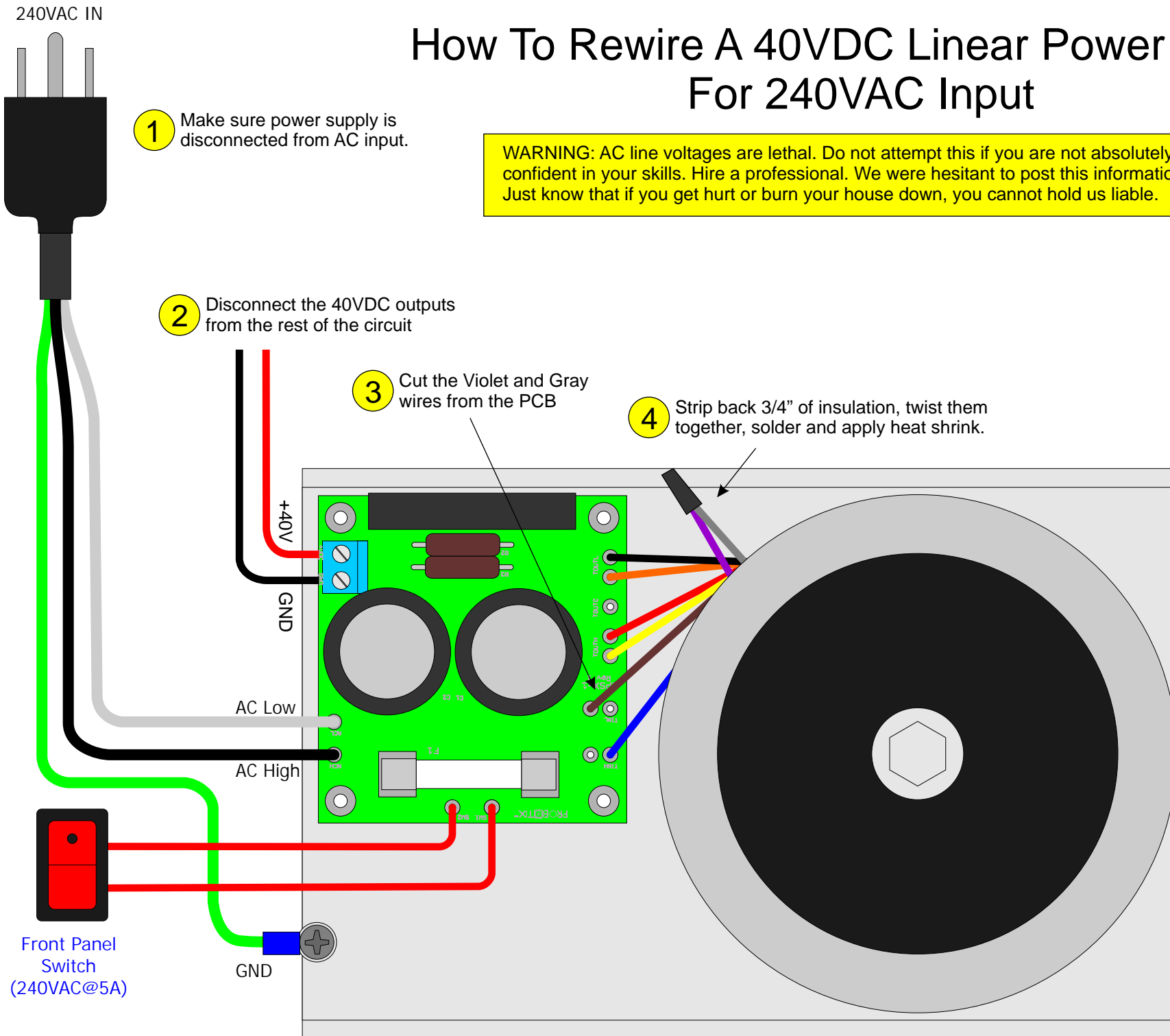
**3** Cut the Violet and Gray wires from the PCB

**4** Strip back 3/4" of insulation, twist them together, solder and apply heat shrink.

**5** Splice on a new cable, or use a plug adapter. Be sure that you match the AC High to our black wire and your AC Low to our white wire. Your colors in your country may be different.

**6** Connect the AC to your wall socket, turn the power supply on and check that the DC out voltage reads near 40V using a volt meter.

**7** Shut the power off and unplug the unit from the wall. Then reconnect the 40VDC lines to the rest of the circuit.



Front Panel Switch (240VAC@5A)

GND

+40V

GND

AC Low

AC High

240VAC IN