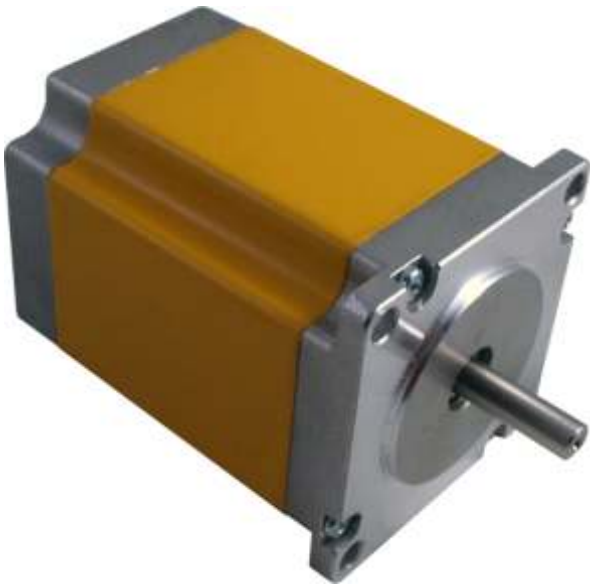


HT23-280-8

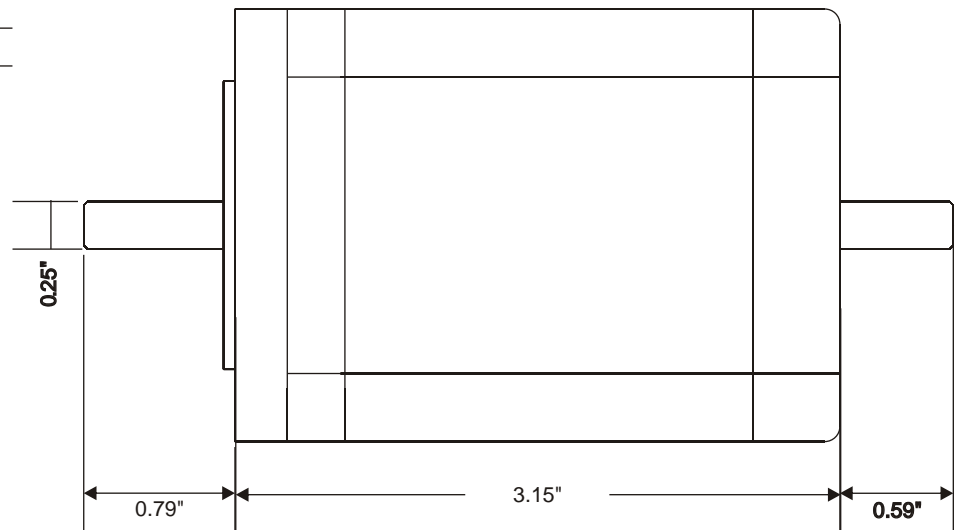
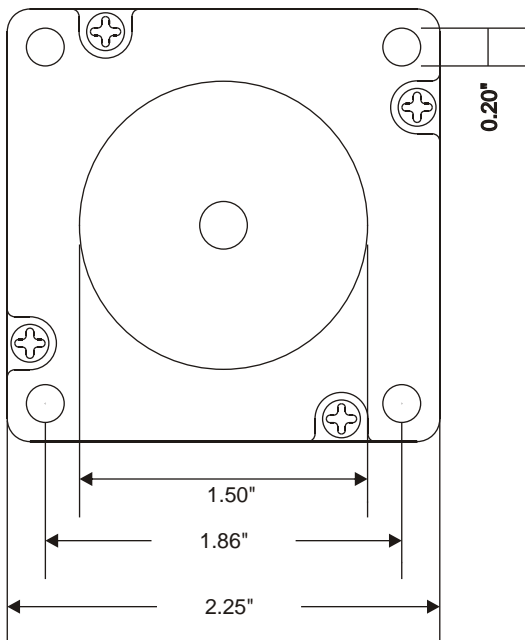
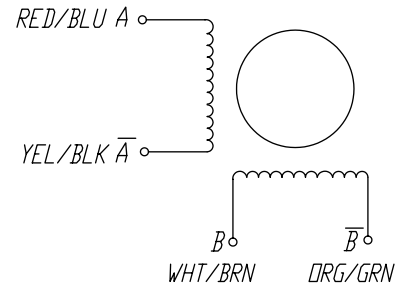
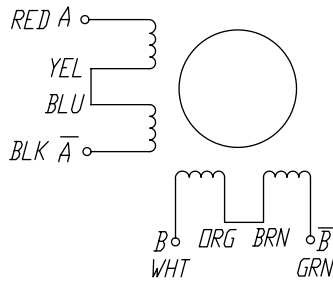
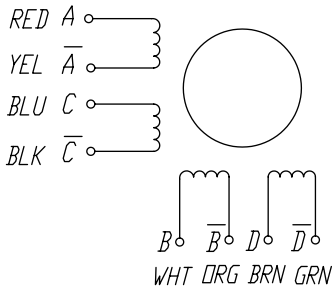
High Torque Stepper Motor

280 OzIn Hybrid Design

1.8 deg / 200 Steps Per Revolution



| | Parallel | Series | UniPolar |
|------------------------------|----------|--------|----------|
| Holding Torque (N.m +-10%) | 2.0 | 2.0 | 1.4 |
| Rated Current (Amps/phase) | 4.2 | 2.1 | 3.0 |
| Resistance (ohm/phase +-10%) | 0.46 | 1.84 | 0.92 |
| Inductance (mH/phase +-20%) | 2.2 | 8.8 | 2.2 |
| Rotor Inertia (g.cm 2) | 480 | | |
| Motor Weight (kg) | 1.0 | | |
| Motor Length (mm) | 76 | | |
| Number of Wires | 8 | | |



23H276-30-8B

